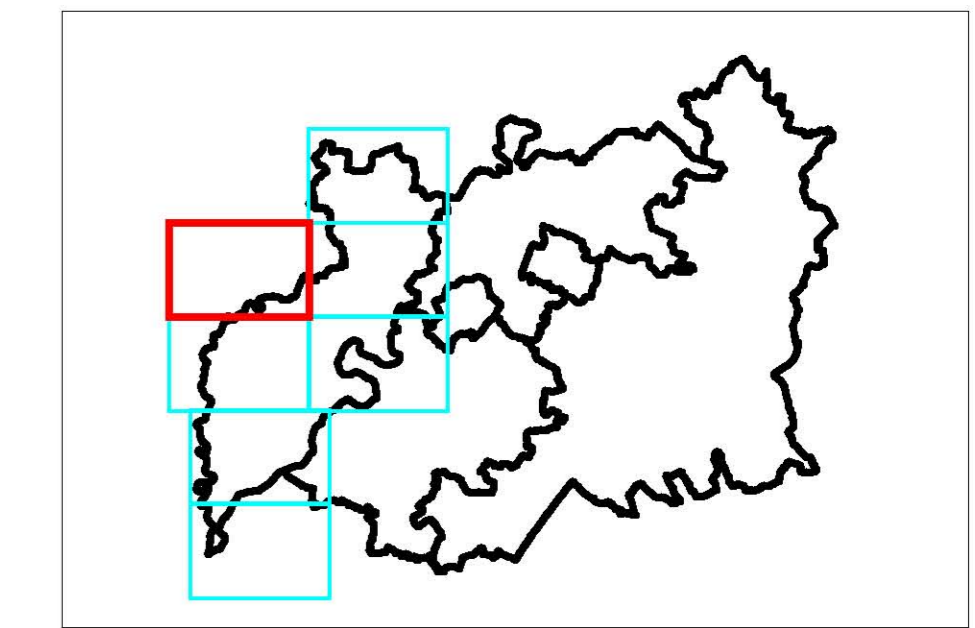





Location Plan:-



Legend:-

-  Council Boundary
-  April 1947
-  July 1968

This map is reproduced from Ordnance Survey material with the permission of Ordnance Survey on behalf of the Controller of Her Majesty's Stationery Office © Crown copyright. Unauthorised reproduction infringes Crown copyright and may lead to prosecution or civil proceedings. Forest of Dean District Council. 100019102, (2008).

Project:- GLOUCESTERSHIRE STRATEGIC FLOOD RISK ASSESSMENT

Tile E2:- HISTORIC FLOODING  
FOREST OF DEAN DISTRICT COUNCIL

Drawn By :- A J Bryan  
Checked By :- B L Dunn  
Approved By :- J R Parkin

Revision  
A  
Status  
FINAL

Drawing Scale :- 1:25,000  
Sheet No. :- 2 of 7  
Plot Scale :- 1:1 @ A1

Drawing No. :- WB/GLOS/DRAWING - 008  
Date :- 26 March 2008  
Issuing Office :- Birmingham

Rev.	By	Date	Description
A	MJ Grogan	12/09/08	April 1947 event added

  
Forest of Dean  
Council Offices  
High Street  
Coleford  
Gloucestershire  
GL16 8HG

  
www.malcrow.com  
Lyndon House  
62 Hagley Road  
Edgbaston  
Birmingham  
B16 8PE