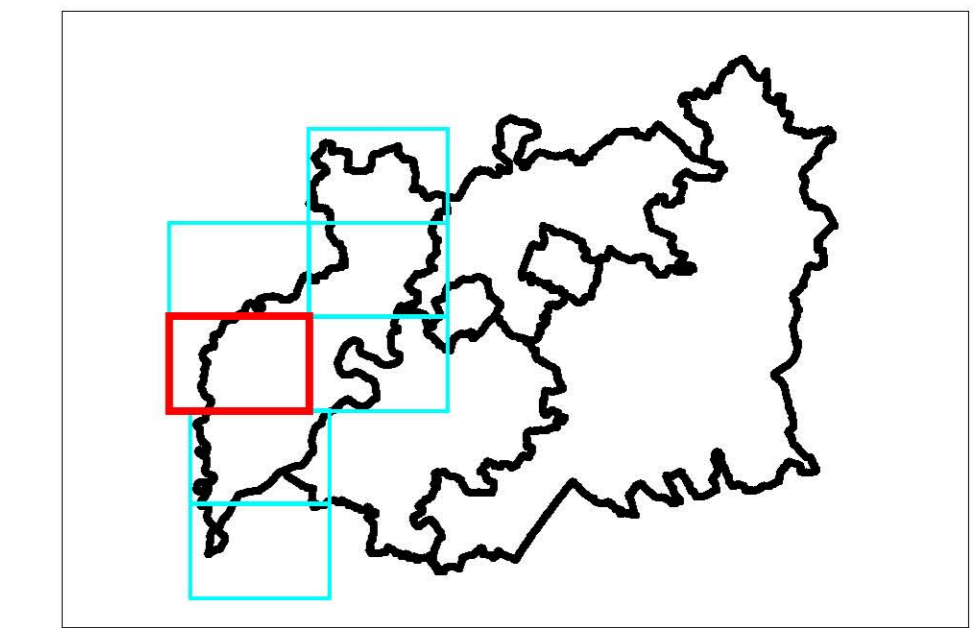





Location Plan:-



Legend:-

-  Council Boundary
-  April 1947
-  July 1968

This map is reproduced from Ordnance Survey material with the permission of Ordnance Survey on behalf of the Controller of Her Majesty's Stationery Office © Crown copyright. Unauthorised reproduction infringes Crown copyright and may lead to prosecution or civil proceedings. Forest of Dean District Council. 100019102. (2008).

Project- GLOUCESTERSHIRE STRATEGIC FLOOD RISK ASSESSMENT

Tile E4:- HISTORIC FLOODING
FOREST OF DEAN DISTRICT COUNCIL

Drawn By :- A J Bryan
Checked By :- B L Dunn
Approved By :- J R Parkin

Revision A
Status FINAL

Drawing Scale :- 1:25,000
Sheet No. :- 4 of 7
Plot Scale :- 1:1 @ A1

Drawing No. :- WB/GLOS/DRAWING - 008
Date :- 26 March 2008
Issuing Office :- Birmingham

Rev.	By	Date	Description
A	MJ Grogan	12/08/08	April 1947 event added



Malcrow

Lyndon House
62 Hagley Road
Edgbaston
Birmingham
B16 8PE