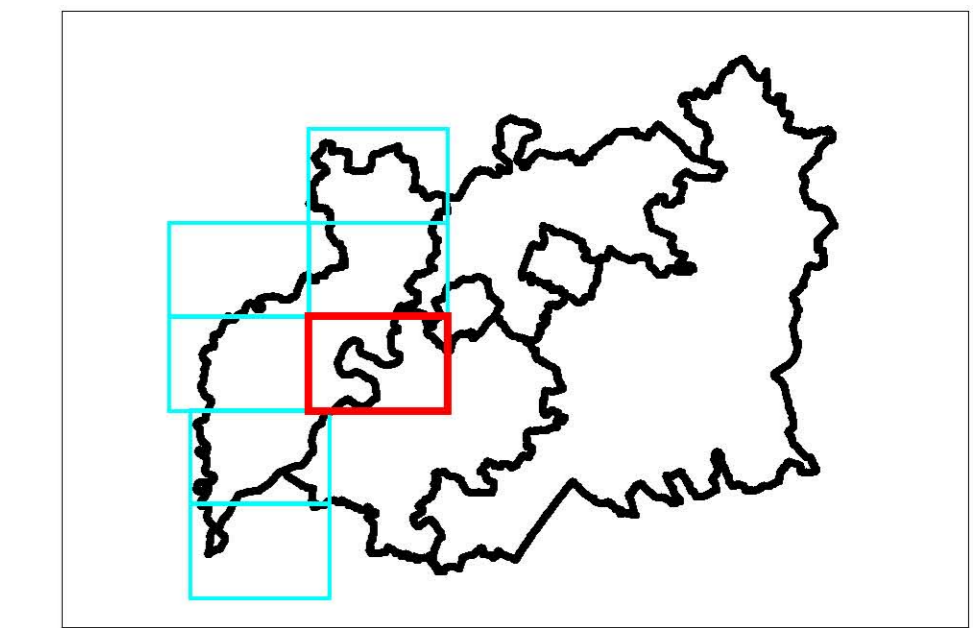







Location Plan:-



Legend:-

-  Council Boundary
-  March 1947
-  July 1968
-  December 1981
-  December 2000

This map is reproduced from Ordnance Survey material with the permission of Ordnance Survey on behalf of the Controller of Her Majesty's Stationery Office © Crown copyright. Unauthorised reproduction infringes Crown copyright and may lead to prosecution or civil proceedings. Forest of Dean District Council. 100019102, (2008).

Project:- GLOUCESTERSHIRE STRATEGIC FLOOD RISK ASSESSMENT

Tile E5:- HISTORIC FLOODING
FOREST OF DEAN DISTRICT COUNCIL

Drawn By :- A J Bryan
Checked By :- B L Dunn
Approved By :- J R Parkin

Revision :-
Status :- FINAL

Drawing Scale :- 1:25,000
Sheet No. :- 5 of 7
Plot Scale :- 1:1 @ A1

Drawing No. :- WB/GLOS/DRAWING - 008
Date :- 26 March 2008
Issuing Office :- Birmingham

Rev.	By	Date	Description



Malcrow
www.malcrow.co.uk
Lyndon House
62 Hagley Road
Edgbaston
Birmingham
B16 8PE