



Forest Edge South Neighbourhood Plan Consultation Webinar

Welcome, the webinar will start shortly

- **Your microphone and video are turned off automatically**
- **Please ask questions using the Q&A box provided**
- **Questions will be answered at the end of each section**
- **If your connection fails, please re-join using the same link**



Forest Edge South Neighbourhood Plan Consultation Webinar

West Dean Parish Council & DLP Planning Limited

Welcome & Introductions



WEST DEAN
PARISH COUNCIL

What this webinar will cover:

- Forest Edge South Neighbourhood Plan – An Overview
- Proposed Neighbourhood Plan Policies
- Regulation 14 Consultation – to get involved
- Next Steps and Close



Please ask questions any time using the **Q&A box**.
These will be answered at the end of the presentation.

Neighbourhood Plan Preparation Stages

Forest Edge Neighbourhood Plan Stages	
Designate Neighbourhood Area	2017
Initial public consultation	2019 – 2020
Initial policy and evidence base review	April 2021
Further evidence gathering	2021 – 2022
Prepare draft neighbourhood plan	2022 – 2023
Public consultation on draft plan (Reg.14)	Current stage
Submission and examination Referendum Adoption	To be completed

Current Stage: Reg.14 Public Consultation

- **Public consultation** required under Regulation 14 of Neighbourhood Plan (General) Regulations 2012
- 6 week consultation period: **26th March to 7th May 2023**
- Opportunity to comment on **any aspect** of the draft plan and supporting documents
- Comments will **inform final submission version** of Neighbourhood Plan



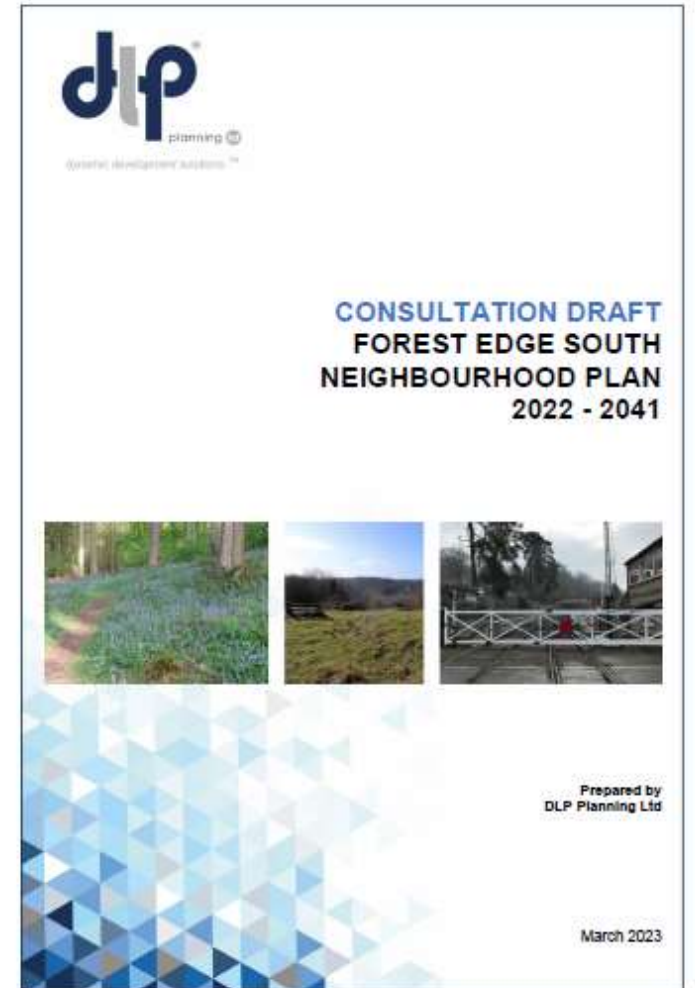
Consultation Documents

Core Documents

- Draft Neighbourhood Plan & Policy Maps

Background and Evidence Base Documents

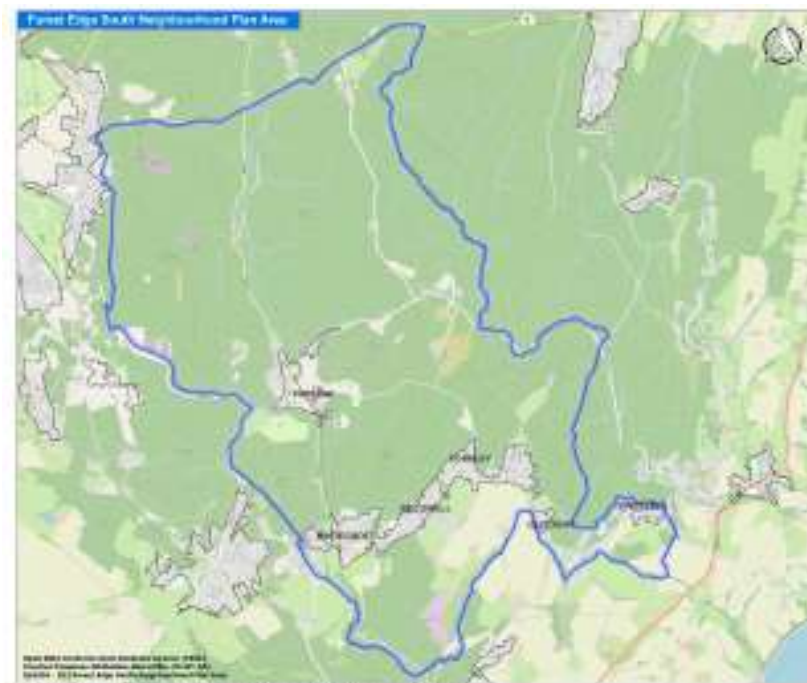
- Initial Public Consultation Questionnaire Results (NDP Steering Group, 2019)
- Community and Voluntary Organisations Survey Results (NDP Steering Group, 2020)
- Business and Employment Survey Results (NDP Steering Group, 2020)
- Forest Edge South Design Guidance (AECOM, 2022)
- Parkend Character Assessment (NDP Steering Group, 2022)
- Pillowell Character Assessment (NDP Steering Group, 2022)
- Whitecroft Character Assessment (NDP Steering Group, 2022)



Consultation Documents

Background and Evidence Base Documents (cont.)

- Yorkley Character Assessment (NDP Steering Group, 2022)
- Oldcroft and Viney Hill Character Assessment (NDP Steering Group, 2022)
- Housing Needs Survey (DLP, 2022)
- Housing Needs Assessment (AECOM, 2022)
- Non-Designated Heritage Assets Assessment Report (NDP Steering Group, 2022)
- Local Green Spaces Assessment Report (NDP Steering Group, 2022)



Source: Forest of Dean Council / Ordnance Survey, 2017

Neighbourhood Plan Vision

“The six settlements that make up 'Forest Edge South' will continue to form an interconnected community valued by residents as a tranquil rural place to live within the wider and historic community of the Forest of Dean. The area will continue to be defined by its location, its history and unique culture, nestling against the ancient woodlands of the Forest.

Future development within 'Forest Edge South' will sustain the needs of the community whilst conserving and protecting the special heritage of the traditional Forest. The Neighbourhood Plan will support and enable this future growth in a sustainable and environmentally considerate way.

The area will provide suitable and appropriate housing; transport, social and communications infrastructure; and employment opportunities across the six settlements to meet the developing needs of the local community.”



Proposed Neighbourhood Plan Policies

Climate Change, Sustainability and Biodiversity

Policies **1** to **4** support developments that provide sustainable design, green spaces, low carbon energy and retain current allotments and community gardens.

Design and Environment

Policies **5** to **8** provide support to developments of good design that preserves the historic environment and local green spaces.





Housing, Employment and Tourism

Policies **9** to **15** provide support for the development of new residential dwellings, employment floorspace and tourism related development.

Transport and Access

Policies **16** to **18** provide support for planning applications that encourage use of sustainable transport modes and set out car parking, cycle and motorcycle parking standards for new developments. It also supports sustainable transport and the Lydney-Parkend multi-use track.

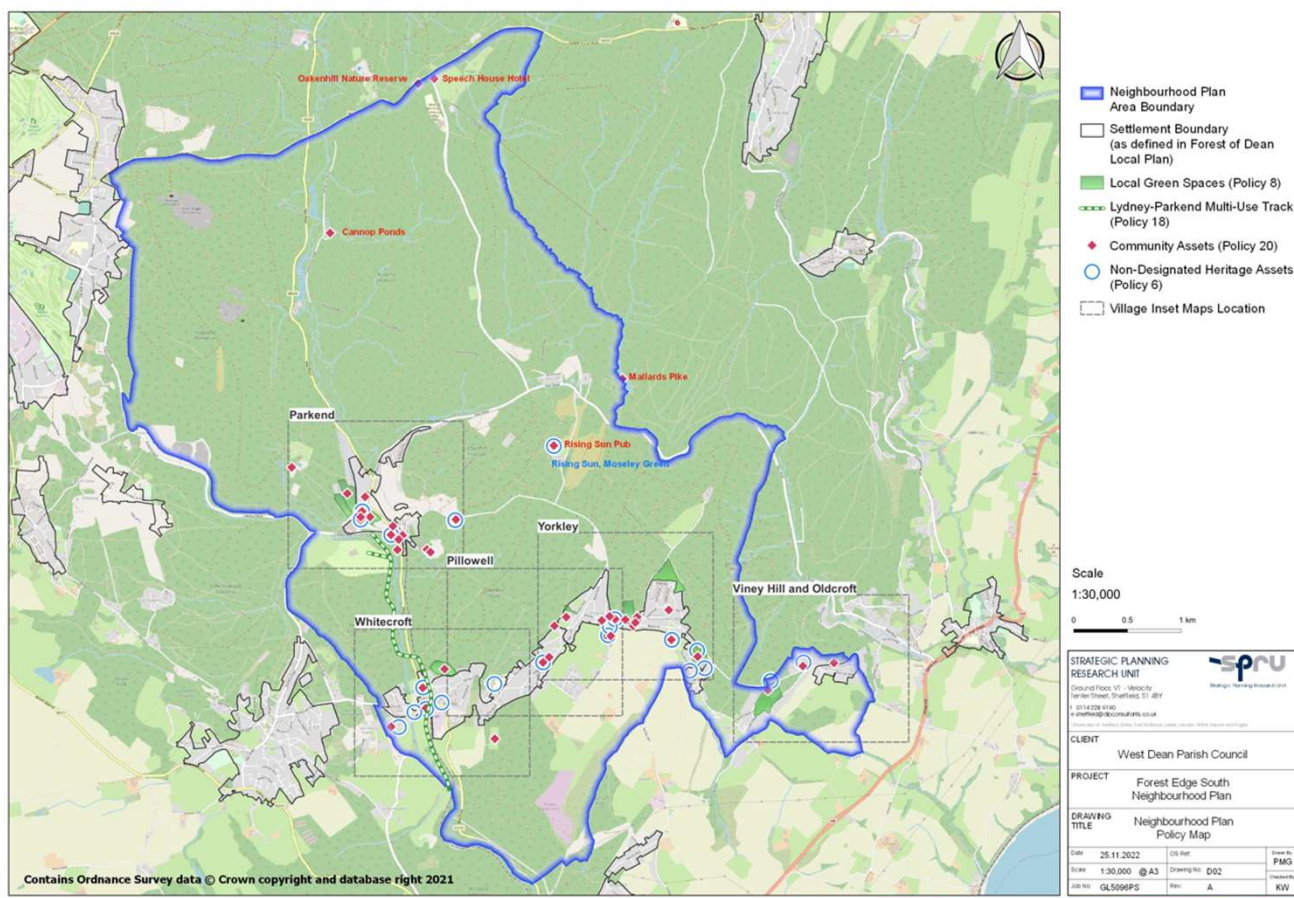
Infrastructure and Amenities

Policies **19** to **22** provide support for development that enhances and supports digital infrastructure, community facilities and small scale retail.



Site Specific Policies and Designations

Appendix 2 of the Draft Neighbourhood Plan includes Policy Maps showing designations, including **Community Assets, Local Green Spaces and Non-Designated Heritage Assets.**



Consultation – How to get involved

- Consultation documents are available to view at <https://fesndp.uk/> and at **The Parish Office, The West Dean Centre, High Street, Bream, Lydney, GL15 6JW** (Monday to Friday, 9.30am to 4.30pm).
- You can comment by:
 - Completing a **paper copy** of the Comments Form and returning this to: West Dean Parish Council, The West Dean Centre, High St, Bream, Lydney GL15 6JW;
 - Completing an **online version** of the Comments Form accessed via the Neighbourhood Plan website (<https://fesndp.uk/>); or
 - **Emailing** your comments to clerk@westdeanpc.org.uk



Next Steps

- All comments received during the consultation will be **reviewed**.
- **Changes/amendments** to the Neighbourhood Plan will be made where necessary.
- A SEA/HRA will be completed, if required (screening currently underway).
- Final 'submission version' Neighbourhood Plan will then be **submitted** to the Forest of Dean District Council.
- The Council will coordinate a further **final stage of consultation** before submitting the plan to an **independent examiner**.
- The Neighbourhood Plan will be **examined** and necessary **modifications** made.
- A **referendum** on the Neighbourhood Plan will be held and if successful it will be **adopted** to form part of the statutory development plan.

Please submit all comments by **7th May 2023**