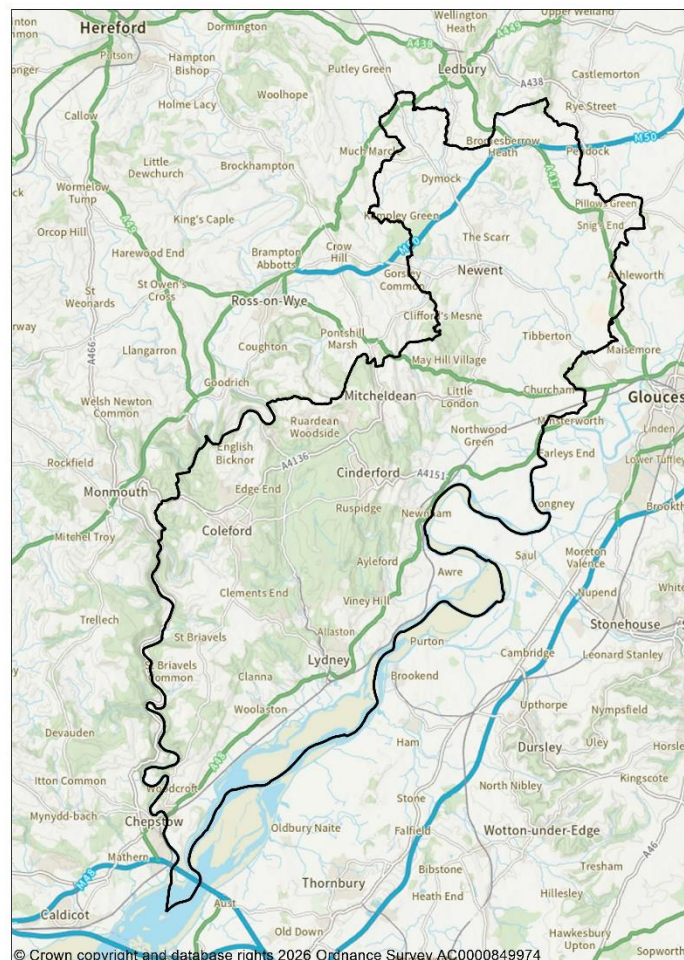




**Notice of intention to commence supplementary plan preparation
The Town and Country Planning (Local Planning) (England) Regulations 2026,
Part 6, Regulation 68**

Forest of Dean District County Council hereby gives notice of its intention to commence preparation of a supplementary plan, which is to be referred to as the Forest of Dean District Landscape Study Supplementary Plan (FDLS).

The FDLS will cover the administrative area of the Forest of Dean, ONS E06000080, This is the Local Planning Authority area of Forest of Dean E60000310, as shown on the map below



The FDLS will cover requirements and guidance with respect to the landscape of the District. The FDLS will contain authority-wide requirements, including:

- Landscape Sensitivity Analysis. A Strategic assessment used to evaluate how resilient a landscape is to changes in land use or development.
- Landscape Susceptibility - Within the context of spatial planning and land

management, landscape susceptibility is the degree to which a defined landscape and its associated visual qualities and attributes might respond to the specific development type / development scenario or other change without undue negative effects on landscape character and the visual resource.

- Landscape Capacity refers to the amount of specified development or change which a particular landscape and the associated visual resource is able to accommodate without undue negative effects on its character and qualities.

The Forest of Dean Local Plan timetable is available to be viewed at [Planning policy - Forest of Dean District Council](#)

A copy of this notice can be viewed on request at Council Offices, High Street, Coleford, GL16 8HG during normal opening hours or on the Council's website at [Notice of intention to commence the Forest of Dean Local Plan 2045 - Forest of Dean District Council](#)

Dated 6th July 2026

Alastair Chapman
Interim Head of Place
Forest of Dean District Council
Council Offices
High Street
Coleford
GL16 8HG