

Pavilion and Fund Raising

Alvington Parish

Appendix 20

Printable Version – (Double sided/duplex)

February 2019

Project – Pavilion and Fund Raising

PROJECT - Pavilion Fund raising

4.14 There was a great deal of interest shown in the methods of raising the finance necessary. Some of the ideas are controversial but all agreed it would need the involvement of the village generally to drive these forward and not just verbal promises. With this in mind it is hoped that the Sports Field Committee will receive some active positive support. The suggestions are listed here with numbers alongside to show commonality of support:

1. Income from the Wind Turbine (6)

This is an obvious approach and one the Council have actively pursued. A grant of £5,000 has been received from REACR (Wind Turbine) to enable plans to be prepared and an architect has been appointed to prepare initial drawings in line with the recommendations of the Sports Field Committee and the feedback received from villagers. Further grant applications are being prepared to enable continued work on this exciting possibility and there have been some very positive responses to enquiries.

2. Annual Fete and BBQ (3)

This a common theme and sadly despite several attempts to support previous requests for a Fete and village Carnival there have been no offers from the village to become involved apart from verbal support. However, if it is believed that if this was held for a worthy cause then more support could be forthcoming.

3. Sponsor a Brick (2)

This would obviously only work if the building was brick however there could be other methods of sponsorship and these should be explored.

4. Sponsors/Heritage fund (4)

Nick the cricket captain spent 4 hours at a very involved and fruitful meeting to discuss various avenues to approach in order to raise charity donations. The Sports Field has already benefitted on 2 occasions from approaches made to the Active Together scheme supported by Patrick Molyneux and more approaches can be made to the various sport sponsors including Gloucester Cricket. The Dog-Training Group has also raised funding which was donated to the Sports Field Fund which is ring fenced for specific use of the Sports Field.

There is currently an expectation from most sponsors that the applicants will demonstrate their willing participation and raise between 5 &10 percent of the funding applied for. Any funding applied for should cover all costs such as the installation of services, footpath and disposal of waste, etc.

5. External team users (8)

Encourage more events on the field, including teams from outside the village, as an income generator for the benefit of the village as a whole. This would generate an interest for the use of the pavilion and would be an income source which would reduce the cost of maintenance. There is sometimes an impression that the field is for the benefit of parishioners only which would restrict the possibility of increased income and limit grant potential.

For example the cricket team has players from as far afield as Cheltenham and Chepstow and so in the bid for funding the entire population of these two areas are considered as potential users and so this would “demonstrate” the popularity of the

field and generate more interest leading to a more generous offer with the subsequent benefit to the village. Figure 2 and 2A shows the draft drawings for the proposals.

- 4.15 The NDP supports investment in new recreation facilities, including the proposal for a new pavilion. A new building on the Sports Field would provide improved local community facilities and support wider objectives to improve health and wellbeing but should be of a high quality design which respects the surrounding area.
- 4.16 The Sports Field and Play Area are protected in the Core Strategy (see Policy CSP. 9 Protection of Recreational use). The Allocations Plan identifies the area as a Recreation Space and the relevant District wide policies include Policy AP 4 Design of Development which requires development to take account of local character and history and to contribute to environmental enhancement.

Figure 2 Alvington Sports Field 2265_6 (Proposed elevations - Layout)

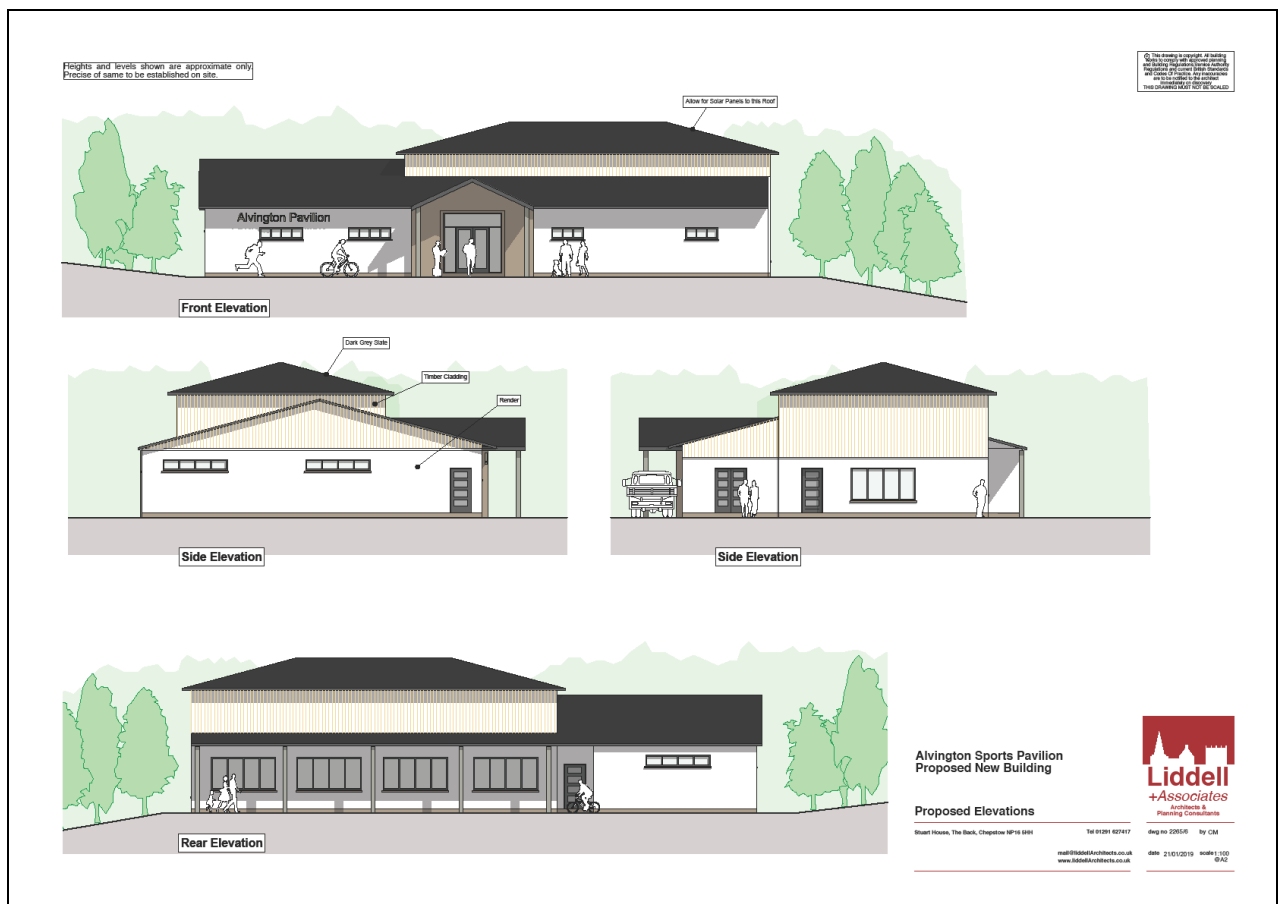
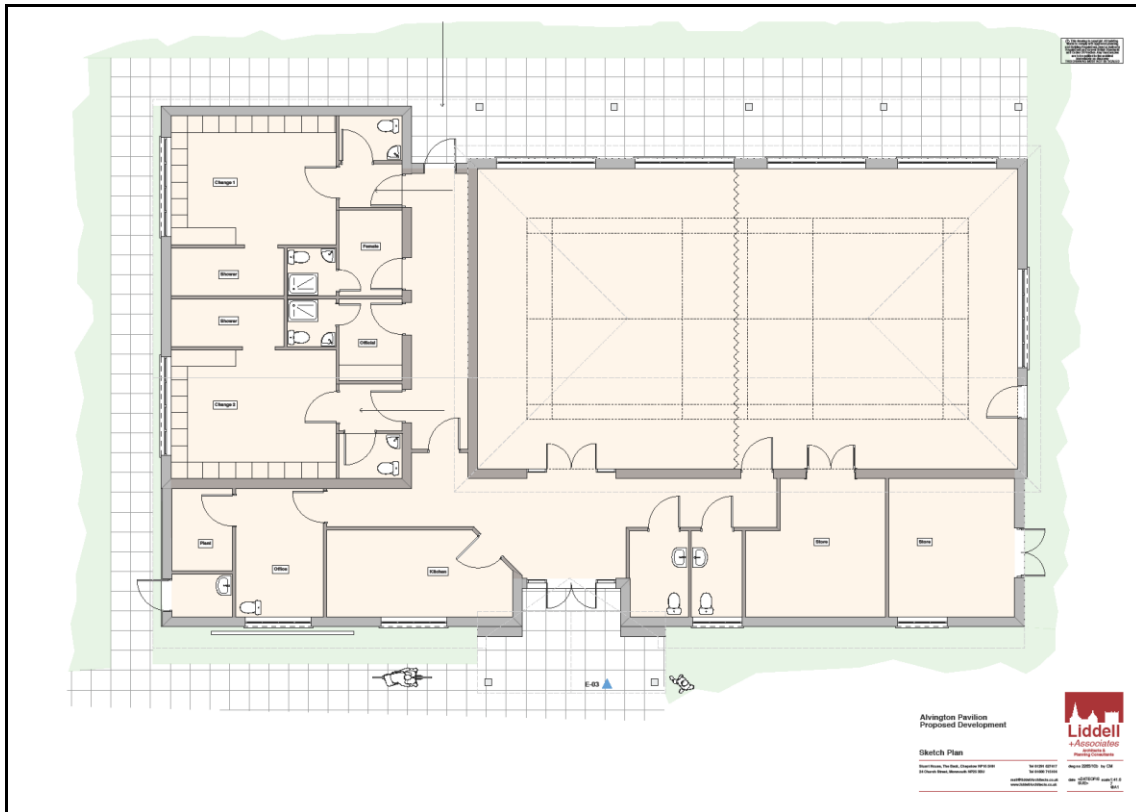
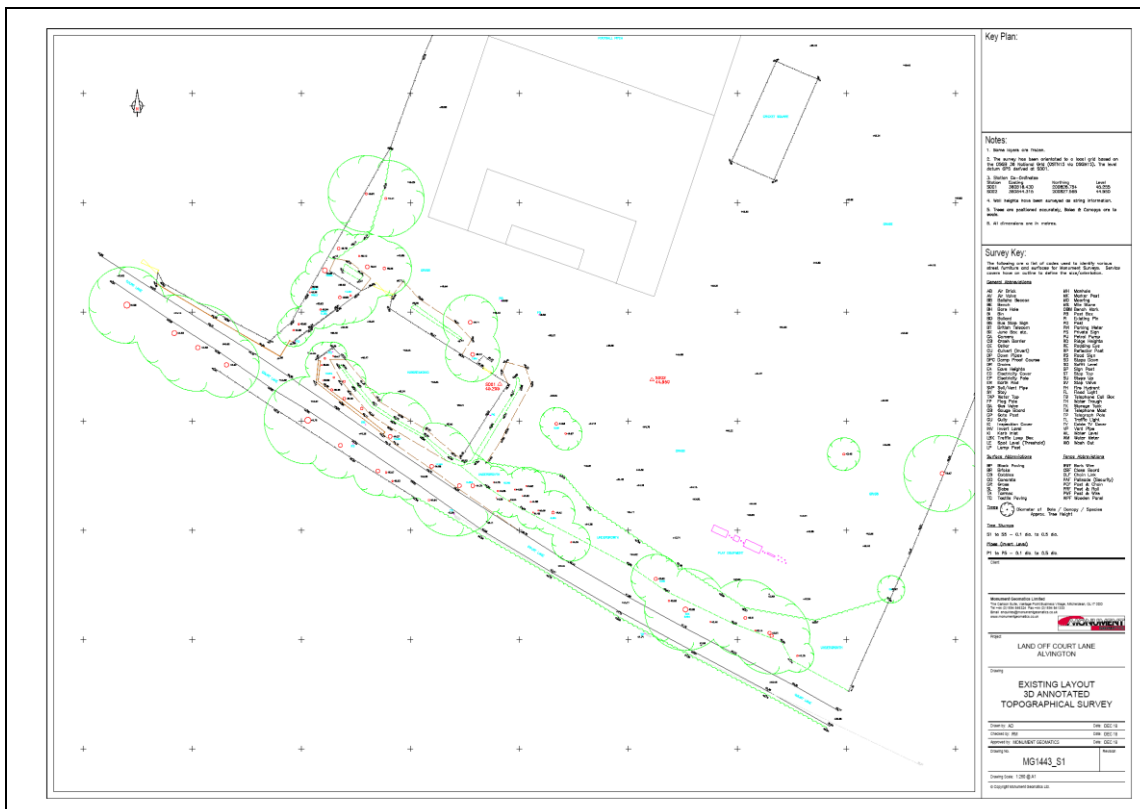


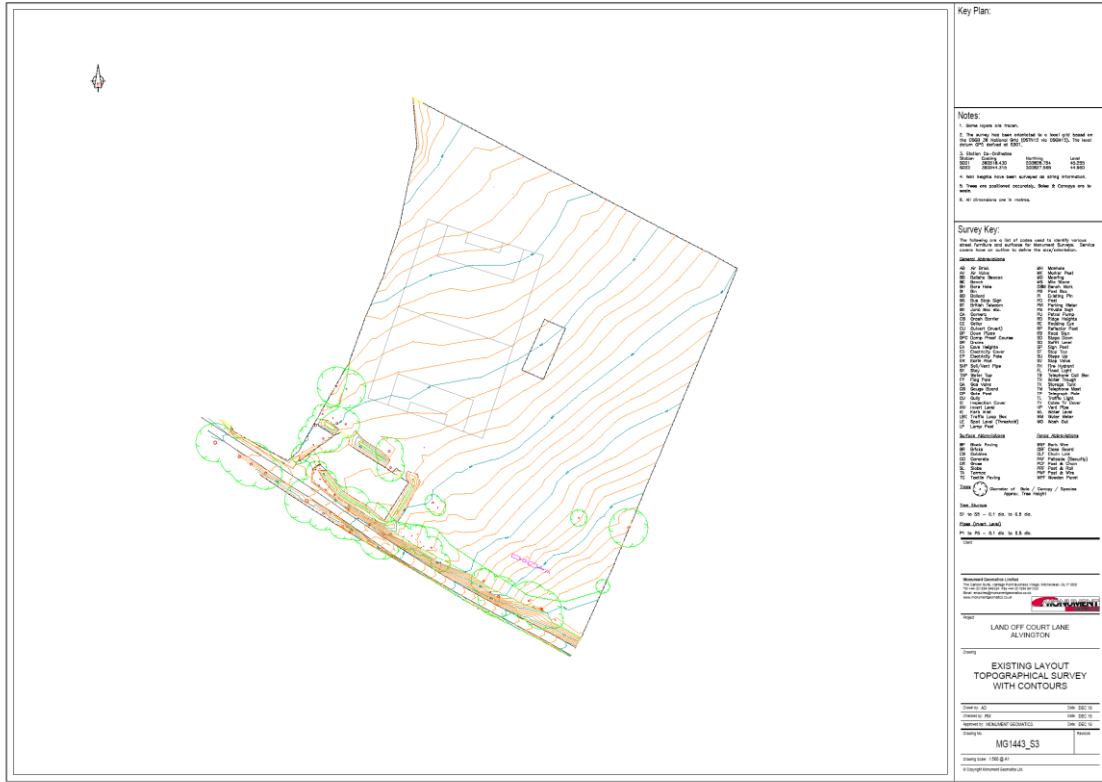
Figure 2A Alvington Sports Field 2265_10b (New Sports Field Pavilion Layout draft drawings)



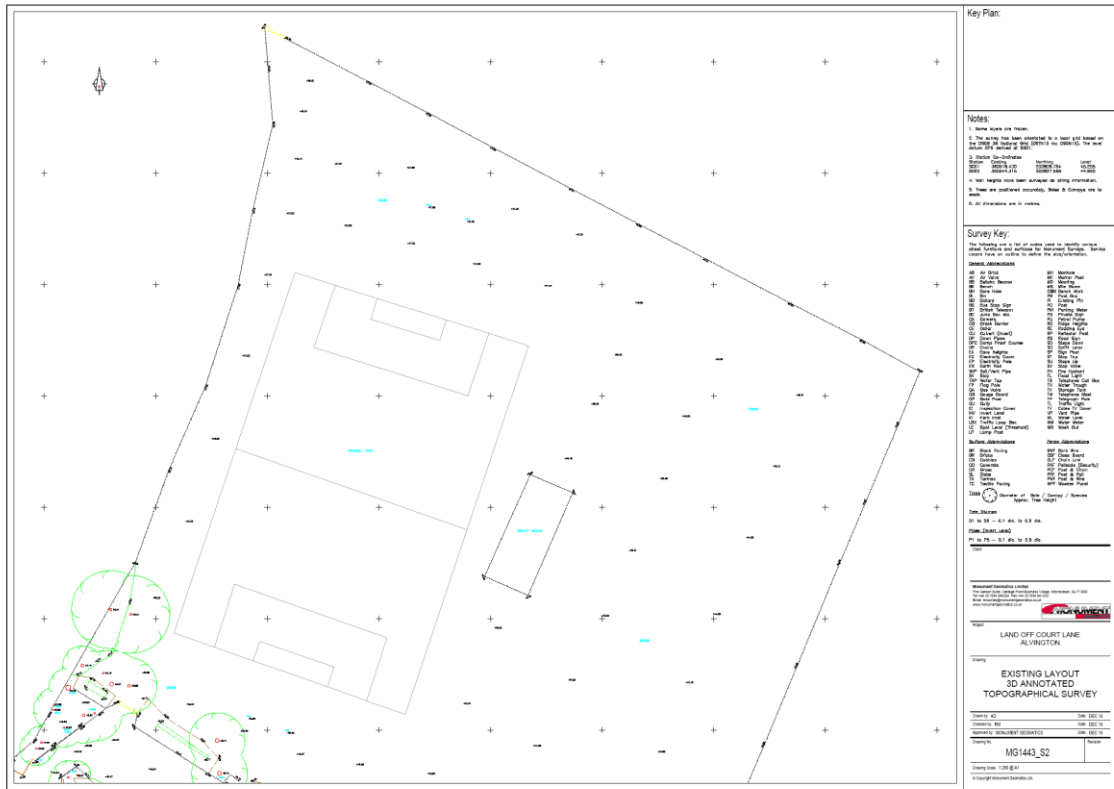
T_MG1443-S1



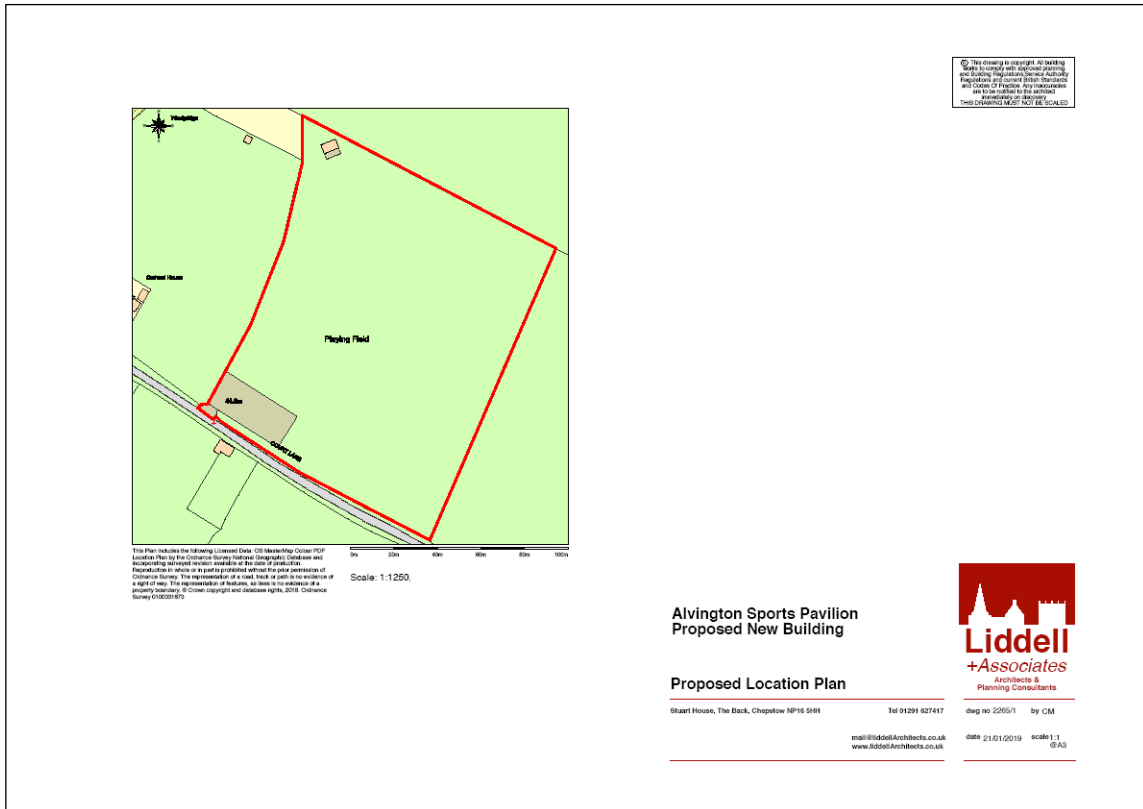
T_MG1443-S2



T_MG1443-S3



2265_1 Proposed Location Plan _ Layout



2265_2 Existing Block Plan _ Layout



2265_3 Proposed Block Plan _ Layout



2265_4a Proposed Site Plan _ Layout



2265_ - Approx Position _ Layout

