

This map is reproduced from Ordnance Survey material with the permission of Ordnance Survey on behalf of the Controller of Her Majesty's Stationery Office © Crown copyright. Unauthorised reproduction infringes Crown copyright and may lead to prosecution or civil proceedings. Forest of Dean District Council. 100019102, (2008).

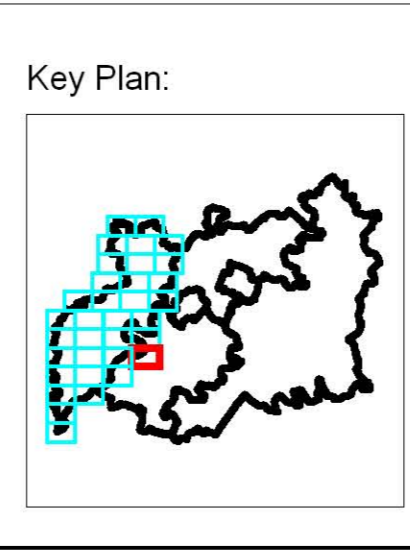
**Project- GLOUCESTERSHIRE STRATEGIC FLOOD RISK ASSESSMENT**

**Title B27:- STRATEGIC FLOOD RISK MAP SHOWING FLOODING FROM ALL SOURCES FOREST OF DEAN DISTRICT COUNCIL**

Rev.	By	Date	Description
A	MJ Grogan	12/08/08	Canal embankments and associated residual risk added

Drawn By	-: A J Bryan	Revision	A	Drawing Scale	-: 1:10,000	Drawing No.	-: WB/GLOS/DRAWING - 002
Checked By	-: B L Dunn	Status	FINAL	Sheet No.	-: 27 of 34	Date	-: 26 March 2008
Approved By	-: J R Parkin	Plot Scale	-: 1:1 @ A1	Issuing Office	-: Birmingham		



**Legend:-**

	Council Boundary		Recorded Flooding - Impounded Water Bodies
	Main River Centreline		Recorded Flooding - Artificial Drainage
	Flood Zone 2 (Medium Probability)		Recorded Flooding - Surface Water
	Flood Zone 3a (High Probability)		Recorded Flooding - Fluvial
	Flood Zone 3b (Functional Floodplain)		Recorded Flooding - Unknown
			Canal Embankments
			Residual Risk

NB: The Environment Agency has not produced Flood Zones for catchments with an area less than 3km<sup>2</sup>. In such instances fluvial flood risk is present but is not illustrated.

Forest of Dean Council Offices  
High Street  
Coleford  
Gloucestershire  
GL16 8HG

**Halcrow**  
www.halcrow.com  
Lyndon House  
62 Hagley Road  
Edgbaston  
Birmingham  
B16 8PE

**PPS25: Flood Zones Definition**

Flood Risk Vulnerability Classification	Essential Infrastructure	Water Compatible	Highly Vulnerable	More Vulnerable	Less Vulnerable
Zone 1	✓	✓	✓	✓	✓
Zone 2	✓	✓	Exception Test Required	✓	✓
Zone 3a	Exception Test Required	✓	✗	Exception Test Required	✓
Zone 3b (Functional Floodplain)	Exception Test Required	✓	✗	✗	✗

✓ : Development is appropriate  
 ✗ : Development should not be permitted

**PPS25: Flood Risk Vulnerability and Flood Zone "Compatibility"**

Flood Risk Vulnerability Classification	Essential Infrastructure	Water Compatible	Highly Vulnerable	More Vulnerable	Less Vulnerable
Zone 1	✓	✓	✓	✓	✓
Zone 2	✓	✓	Exception Test Required	✓	✓
Zone 3a	Exception Test Required	✓	✗	Exception Test Required	✓
Zone 3b (Functional Floodplain)	Exception Test Required	✓	✗	✗	✗

✓ : Development is appropriate  
 ✗ : Development should not be permitted

**PPS25: Flood Risk Vulnerability Classification**

Essential Infrastructure	- Essential transport infrastructure (including mass evacuation routes) which has to cross the area at risk, and strategic utility infrastructure, including electricity generating power stations and grid and primary substations.
Highly Vulnerable	- Police stations, Ambulance stations and Fire stations and Command Centres and telecommunications installations required to be operational during flooding. - Emergency disposal points - Basement dwellings - Caravans, mobile homes and park homes intended for permanent residential use. - Installations requiring hazardous substances consent 19
More Vulnerable	- Hospitals - Residential institutions such as residential care homes, children's homes, social services homes, prisons and hostels - Buildings used for dwelling houses, student halls of residence, drinking establishments, nightclubs, and hotels - Non-residential uses for health services, nurseries and educational establishments - Landfill and sites used for waste management facilities for hazardous waste 20 - Sites used for holiday or short-let caravans and camping, subject to a specific warning and evacuation plan.
Less Vulnerable	- Buildings used for shops, financial, professional and other services, restaurants and cafes, food takeaways, offices, general industry storage and distribution, non-residential institutions not included in 'more vulnerable', and assembly and leisure - Land and buildings used for agriculture and forestry - Waste treatment (except landfill and hazardous waste facilities) - Minerals working and processing (except for sand and gravel working) - Water treatment plants - Sewage treatment plants (if adequate pollution control measures are in place).
Water-compatible Development	- Flood control infrastructure - Water transmission infrastructure and pumping stations - Sewage transmission infrastructure and pumping stations - Sand and gravel workings - Docks, marinas and wharves - Navigation facilities - MCO defence installations - Ship building, repairing and dismantling, dockside fish processing and refrigeration and compatible activities requiring a waterside location - Water-based recreation (including sleeping accommodation) - Lifeguard and coastguard stations - Amenity open space, nature conservation and biodiversity, outdoor sports and recreation and essential facilities such as changing rooms - Essential ancillary sleeping or residential accommodation for staff required by uses in this category, subject to a specific warning and evacuation plan.